

## YRCB18&21-26

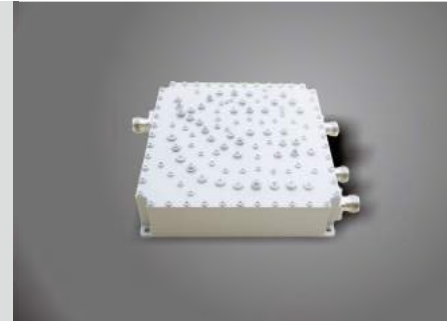


Dual Band Combiner

### Features

- ★High isolation between different both input ports
- ★Lower insertion loss
- ★Higher reliability
- ★Easy installation for indoor and outdoor

## YRCB08&09-18-21



Tri-band Combiner

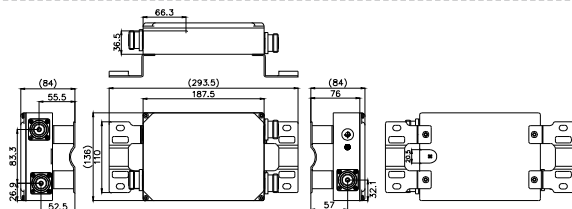
### Features

- ★Low PIM
- ★Low insertion loss
- ★High rejection
- ★DC by pass
- ★For indoor and outdoor applications

Product Index	Parameters		Indicator	
	Product Model	YRCB18&21-26		
Frequency Range	1710 ~ 2170MHz		2300 ~ 2690MHz	
Insertion Loss	≤0.3dB		≤0.35dB	
In band Ripple	≤0.25dB		≤0.3dB	
Rejection	≥60dB@2300 ~ 2690MHz		≥60dB@1710 ~ 2170MHz	
VSWR	≤1.25			
DC by Pass	Support			
DC pass Current	≤3A			
Impedance	50Ω			
Inter-modulation Distortion	≤-150dBc(@2×43dBm)			
Power Capacity	Avg.≤300W			
Overall Dimensions(L*W*H)	184×91×37mm			
Connection Model	DIN-Female			
Working Temperature	-30°C ~ +70°C			
Relative Humidity	5% ~ 95%			
Weight	1.9Kg			
MTBF	>100,000Hours			
Ingress Protection	IP67			

Product Index	Product Model			YRCB08&09-18-21		
	Frequency Range	800~960MHz	1710~1880MHz		1920~2170MHz	
Insertion Loss	≤0.25dB	≤0.3dB		≤0.35dB		
Rejection	≥60dB@1710~1880MHz ≥60dB@1920~2170MHz	≥60dB@806~960MHz ≥60dB@1920~2170MHz		≥60dB@806~960MHz ≥60dB@1710~1880MHz		
Power Capacity	Avg.≤300W					
Inter-modulation	≤-150dBc(@43dBm×2)					
VSWR	≤1.25					
Ripple in Band	≤0.25					
Impedance	50Ω					
Relative Humidity	0~95%					
Working Temperature	-30°C~+70°C					
Ingress Protection	IP55					
Dimension	271×184×79.5mm					
Weight	≤4.5Kg					
Connector	N-Female					
MTBF	>100,000Hours					

### Sketch Diagram



### Sketch Diagram

